

MONTHLY MEMBERSHIP PROGRESS REPORT

LOCATION OHIO

District 13 OH3

Results as of: 1/31/2022

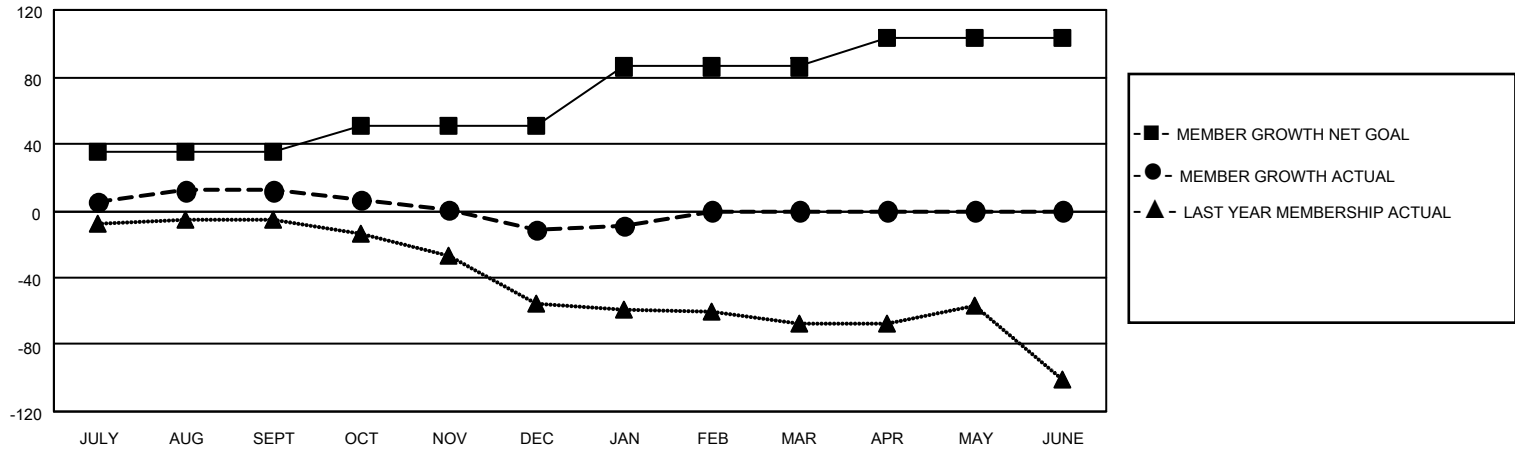
Clubs			
RESULTS FOR 2021-2022			
QUARTER	NEW CLUB GOAL	NEW CLUBS	DROPPED CLUBS
JULY/AUG/SEPT	0	0	0
OCT/NOV/DEC	1	0	0
JAN/FEB/MAR	0	0	0
APR/MAY/JUNE	1	0	0

Members			
RESULTS FOR 2021-2022			
QUARTER	MEMBER GROWTH NET GOAL	MEMBER GROWTH ACTUAL	DROPPED MEMBERS ACTUAL (including transfers)
JULY/AUG/SEPT	35	44	25
OCT/NOV/DEC	16	24	44
JAN/FEB/MAR	35	13	10
APR/MAY/JUNE	17	0	0

GOALS AND ACTUAL NEW CLUBS CUMULATIVE



GOALS AND ACTUAL MEMBERS CUMULATIVE



DROPPED CLUBS: 0	
<u>DROPPED MEMBERS</u>	
DECEASED	20
CLUB CANCELLED	0
OTHER	59
TOTAL	79

21 CLUBS OF 53 ADDED 1 OR MORE NEW MEMBERS

[CLICK HERE FOR CUMULATIVE MEMBERSHIP DATA](#)

<u>GENDER DISTRIBUTION</u>	
MALE	925 (67.67%)
FEMALE	442 (32.33%)
NON BINARY	0 (0.00%)
PREFER NOT TO ANSWER	0 (0.00%)
TOTAL FAMILY UNIT MEMBERS	298
FAMILY MEMBERS PAYING HALF DUES	153